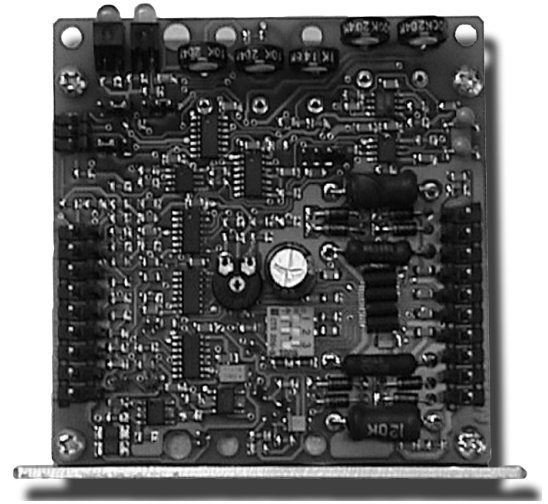


PRODUCT RELEASE

MBC25PG1 / MBC25PG1L Microstep Driver with Pulse Generator

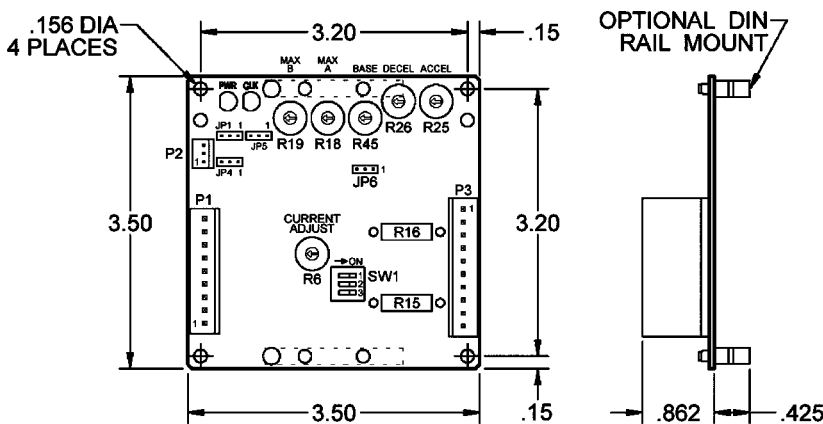
- Output Current of 2.5A Peak
- 200 to 1600 Steps/Revolution
(1, 2, 4 and 8 Selectable Step Operation)
- Drives Two Motors In Series
- On-Board Pulse Generator
- Pulses From 50Hz to 44kHz
- Clock Output for Daisy Chaining
- Motor On/Off Input
- Short Circuit Protection



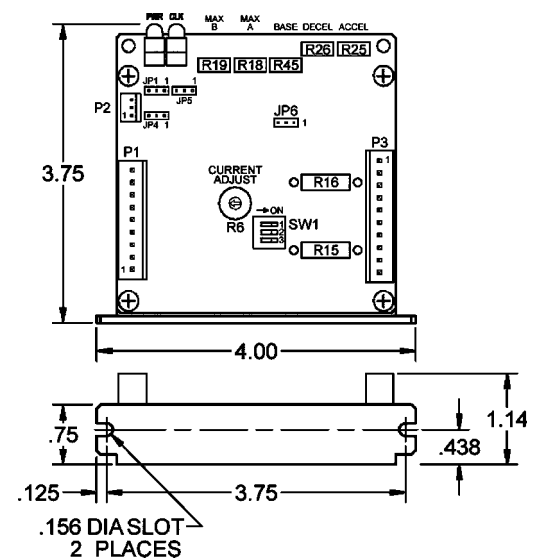
The MBC25PG1(L) microstep driver/pulse generator has an output current capability of 0.5A minimum to 2.5A maximum (peak rating). The MBC25PG1(L) driver operates with a DC voltage of 12VDC to 35VDC. The logic inputs can be operated from +5VDC minimum to +24VDC maximum. The MBC25PG1(L)'s internal PG (pulse generator) is a linear ramping PG designed to be used with this driver. It has adjustable base speeds and max speeds, independent adjustments for acceleration (ramping up) and deceleration (ramping down), jumper selectable external or on-board max speed potentiometer and a jumper selectable deceleration profile. The MBC25PG1(L) has features to accept a pulse source from an external generator and a clock output of it's internal pulse generator that can be used to daisy chain MBC25PG1(L)s together. The driver is capable of running either one motor or two motors in series with features that include direction control and motor current On/Off capabilities. The "Reduce Current Enabled" feature automatically reduces motor current to 70% of the set value. The driver has built in features to indicate power on (green LED) and clocks being received (yellow LED).

With the MBC25PG1(L), various step resolutions can be implemented by using the on-board dip switch. The microstep divisions range from 200 steps/rev to 1600 steps/rev. The bipolar drive configuration handles 4, 6, and 8 lead step motors and is also equipped with short circuit, over temperature and crossover current protection.

MBC25PG1



MBC25PG1L



ANAHEIM AUTOMATION

910 East Orangefair Lane, Anaheim, CA 92801
e-mail: info@anaheimautomation.com

(714) 992-6990 fax: (714) 992-0471
website: www.anaheimautomation.com